



Lean Portfolio Management (LPM)

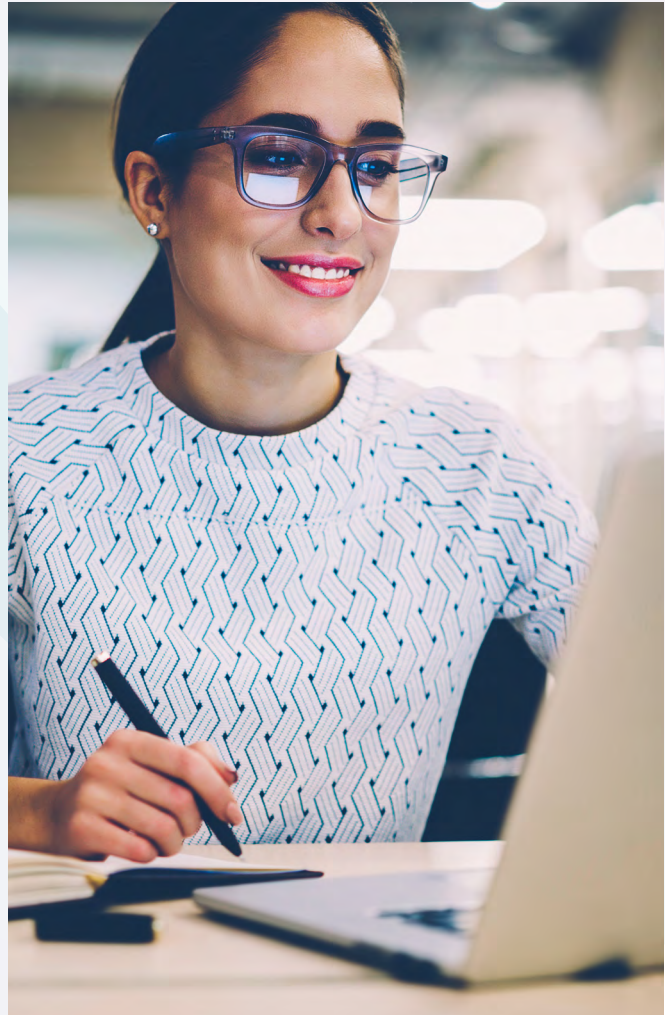
Aligning Strategy with Execution using
the Scaled Agile Framework® (SAFe®)



Overview

Lean Portfolio Management is an interactive course which explores the practical tools and techniques necessary to implement strategy and investment funding, agile portfolio operations, and lean governance.

Participants have the opportunity to capture the current and future state of their portfolio with the Portfolio Canvas tool and identify important business initiatives for achieving the portfolio vision. Participants establish portfolio flow with the Portfolio Kanban and prioritize epics for maximum economic benefit. The course also provides insights on how to establish value stream budgets and lean budget guardrails and measure the lean portfolio performance.





Key Topics

This course explores the following content:

- » Introducing Lean Portfolio Management (LPM)
- » Establishing Strategy and Investment Funding
- » Applying Agile Portfolio Operations
- » Applying Lean Governance
- » Implementing the LPM function



Objectives

Duration

CLASSROOM

3 days

This course focuses primarily on the Lean-Agile mindset and role of a Lean Portfolio Manager and will enable participants to:

- » Describe Lean Portfolio Management (LPM)
- » Connect the Portfolio to the Enterprise Strategy
- » Establish the Portfolio Vision
- » Implement Lean Budgeting and Guardrails
- » Establish flow with the Portfolio Kanban
- » Support Operational Excellence with an Agile Program management Office (PMO) and Communities of Practice (CoP)
- » Coordinate Value Streams
- » Measure LPM Performance
- » Build a plan for LPM implementation

Exam and Certification

Attending this course prepares you to take the Lean Portfolio Management (6.0) exam to become a Certified Lean Portfolio Manager. The exam is a multiple choice, closed-book, web-based examination (90 mins, 45 questions, 71% passing score) taken **after course completion**.



First exam attempt is included as part of the course registration fee if the exam is taken within **30 days of course completion**.

Attendees who pass the exam will receive:

- » Certified SAFe Lean Portfolio Manager PDF certificate
- » Certified SAFe Lean Portfolio Manager digital badge to promote your accomplishment online
- » One-year membership to the SAFe Community Platform, with access to the LPM Community of Practice
- » Access to Meetup groups and events that connect you with other SAFe certified professionals
- » A variety of learning resources to support you during your SAFe journey

Attendees must attend all days of the course to be eligible for the exam.



Course Delivery

As part of PM-Partners' new integrated learning solution, this course offers students the option to attend our bespoke classroom in person or virtually by dialling in from a remote location. Trainers are skilled at both delivery methods and use the latest in virtual technology to simultaneously provide participants with the same interactive, multi-faceted and challenging learning experience. Whichever delivery mode learners choose, comprehension and recall techniques will be used to provide them with a solid understanding of SAFe.

For group bookings, courses can be customised to suit your requirements and conducted onsite at your premises, at our training centre, or virtually.



PM-Partners is a Scaled Agile Gold Partner.



Who is this course for?

- » Members working with the Scaled Agile Framework.
- » Team members with a Lean Agile Mindset who would like to align the Strategy and Execution of the Portfolio within the framework.
- » Directors
- » C-Suite Leadership group
- » Business Owners
- » Consultants
- » Agile Coaches
- » Portfolio or Program Managers
- » Product Managers
- » Solution Managers
- » Portfolio Managers
- » Enterprise Architects
- » Release Train Engineers (RTE)

Participants should:

- » Be familiar with agile concepts and principles
- » Be familiar with value streams
- » Be familiar with portfolio management funding models
- » Have attended a Leading SAFe course
- » Have experience working in a SAFe environment

Professional Development Units (PDUs)

Participants who have been awarded the Project Management Professional (PMP)[®] credential by the Project Management Institute (PMI)[®] are eligible to earn 21 PDUs (8 Technical, 8 Strategic and Business Management and 5 Leadership) for their participation in this course. **21 PDUs** (8 Ways of Working, 8 Business Acumen and 5 Power Skills)

CPDs

Participants holding any of the Project Management accreditations (CPPP/CPPM/ CPPD) are eligible to earn CPDs as follows: **20 CPDs**

Why learn with PM-Partners?

Because we turn your career goals into reality.

Poor project skills are consistently quoted as a key reason for project failure. To be successful in project delivery, it's critical to invest in yourself and the capabilities of your team. This means setting clear goals and making a commitment to continuous improvement.

Certification and training is a vital part of this journey. But you need to know which foot to put forward, and when, to ensure you're heading in the right direction. That's where our expert guidance and support comes in.

Tell us where you want to go

At PM-Partners we start every conversation with the question, 'Where are you trying to go?' We then apply our expertise to show you exactly 'how' to get there.

We believe that having the relevant skills and methodologies is critical to delivery success, and ultimately career success. Depending on your aims, our team of professional development consultants will work closely with you to create a development pathway, or team training program, that aligns with your goals.

Helping to develop professional capabilities for 25 years

Our accredited programs provide certification and development across a range of globally recognised project management and delivery streams.



Mike Boutel
Head of Training



Nekta Vamvoukakis
Corporate Training
Consultant



Jourdan Clark
Professional Development
Manager

Each year, our expert facilitators train and certify more than 12,000 people throughout Australia, New Zealand and South-East Asia to best practice standards. All highly qualified practitioners in their field, they draw from real-life scenarios and their own experience to add real value for individuals, teams and organisations.

Our promise to you

PM-Partners is committed to providing industry leading education that is relevant, up-to-date and designed to meet your specific needs.

We offer qualifications in multiple disciplines, including key products in AXELOS' best practice portfolio, such as ITIL®, PRINCE2®, PRINCE2 Agile®, MSP®, MoP®, P3O® and P3M3®; APMG's AgilePM®, AgileBA®, AgilePgM™, Lean Six Sigma, Managing Benefits, Facilitation and Change Management; as well as the Scaled Agile Framework® (SAFe®); and Business Analysis programs from The Australian Chapter of the International Institute of Business Analysis™ (IIBA®), to name a few.

To find out more about how we can help you or your organisation uplift their capability, contact the experts on 1300 70 13 14.

Leading the way in training delivery

Our training facilities are equipped with the latest and most innovative technology to bring you the best learning experience.



CLASSROOM



VIRTUAL



ONLINE

Shop online with confidence



SECURE CHECKOUT
SATISFACTION GUARANTEED



CREDIT CARD

Amex, Visa, Mastercard



INVOICE



PURCHASE ORDER



BANK TRANSFER

*Please note: payment is due 14 days before course start date.

Buy now, pay later with interest-free terms

Pay just 50% of your course fee now and pay the other 50% 14 days before your course starts. Select invoice on checkout and one of our consultants will call you to arrange your payment plan.



Customer story

Listen to Dominic Cain speak about how he went from being a young Chef to a Programme Director.





PM-Partners have
been leaders in training and
professional certification for
over 20 years.

Our trainers are highly
qualified practitioners in their
chosen fields.

**SYDNEY OFFICE**

Level 5
45 Clarence Street
Sydney NSW 2000
Phone: 1300 70 13 14

MELBOURNE TRAINING CENTRE

Karstens
Level 9, 123 Queens Street
Melbourne VIC 3000
Phone: 1300 70 13 14

MELBOURNE OFFICE

Level 21
459 Collins Street
Melbourne VIC 3000
Phone: 1300 70 13 14

CANBERRA OFFICE

Level 4 & 5
15 Moore Street
Canberra City ACT 2601
Phone: 1300 70 13 14

BRISBANE OFFICE

Level 24
215 Adelaide St
Brisbane QLD 4000
Phone: 1300 70 13 14

SINGAPORE OFFICE

20 Bendemeer Road #03-12
Singapore 339914
Phone: +65 6818 5771

info@pm-partners.com.au | www.pm-partners.com.au

Share this course:



FACEBOOK



LINKEDIN

